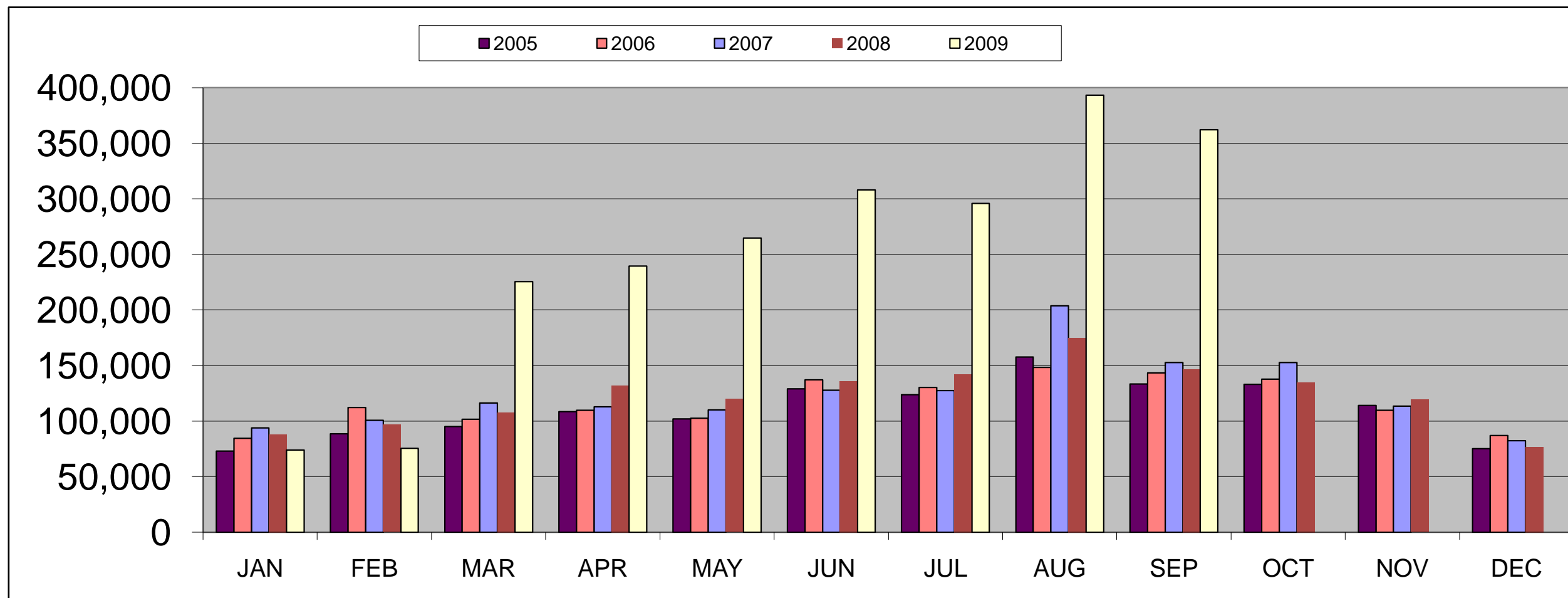


WASHTENAW COUNTY ACCOMMODATION TAX COLLECTIONS 1998-2009

	JAN	FEB	MAR	APR	MAY	JUN	JUL	AUG	SEP	OCT	NOV	DEC	Annual Total	% Change
1998	64,622.18	74,426.97	78,225.23	80,430.52	95,354.04	110,967.36	108,791.54	116,137.87	109,063.82	106,329.43	89,685.55	65,404.88	\$1,099,439.39	8.48%
1999	74,386.64	76,354.21	97,024.03	98,748.85	107,817.42	119,762.36	117,327.21	129,672.15	115,841.40	118,384.78	94,592.80	77,015.25	\$1,226,927.10	11.60%
2000	80,224.44	86,268.62	102,733.39	98,811.47	113,693.75	127,554.94	124,886.12	146,019.66	128,957.83	130,877.35	100,116.44	71,695.46	\$1,311,839.47	6.92%
2001	82,731.97	84,363.71	101,795.45	105,463.95	107,627.87	124,731.58	122,790.06	148,879.79	96,086.61	110,688.01	95,731.29	63,954.45	\$1,244,844.74	-5.11%
2002	79,412.70	86,717.69	97,571.48	105,611.53	109,957.03	124,705.62	117,366.31	153,047.97	105,145.14	122,269.78	95,716.94	62,224.71	\$1,259,746.90	1.20%
2003	73,967.43	73,437.57	89,450.99	98,612.67	90,650.36	114,223.95	124,285.60	146,237.66	118,238.05	121,258.54	93,230.78	61,762.36	\$1,205,355.96	-4.32%
2004	72,920.04	76,873.08	88,715.13	107,958.28	103,452.03	122,028.82	122,075.20	145,997.69	132,439.75	124,334.19	106,963.06	74,230.85	\$1,277,988.12	6.03%
2005	73,179.91	88,707.67	95,230.76	108,640.62	102,174.47	129,034.07	123,905.16	157,877.52	133,575.53	133,040.50	114,187.39	75,378.48	\$1,334,932.08	4.46%
2006	84,530.97	112,440.93	101,868.80	109,739.75	102,528.14	137,180.45	130,500.10	148,344.95	143,552.19	137,852.13	109,676.56	87,192.95	\$1,405,407.92	5.28%
2007	93,921.30	100,728.63	116,496.15	112,894.67	110,154.11	128,007.64	127,667.07	203,682.44	152,702.97	152,702.97	113,404.88	82,339.15	\$1,494,701.98	6.35%
2008	88,095.19	96,847.04	108,098.74	132,268.21	119,954.45	135,935.42	142,176.28	174,811.46	146,969.05	135,088.30	119,414.82	76,885.63	\$1,476,544.59	-1.21%
2009	74,007.19	75,574.58	225,618.12	239,717.52	264,746.84	307,997.47	295,891.23	393,129.13	362,148.45				\$ 2,238,830.53	

MONTHLY COMPARISON



Note: The Accommodation excise tax has been increased from 2% to 5% effective on March 1, 2009.

Prepared by:

CATHERINE McCLARY, CPFO
 Washtenaw County Treasurer
 200 N. Main, Suite 200
 PO Box 8645
 Ann Arbor, MI 48107-8645
taxes@ewashtenaw.org